



# DIVING BOARD OWNERS MANUAL



**DONT ROCK THE BOAT**



# **WARNING**

**Please read this owner's manual before taking your new LilliPad Diving Board out of the box. It is vital to your safety and to the safety of others that you follow the instructions contained in this manual.**

**If you have any questions,  
you may contact us as follows:**

**LilliPad, LLC**

**800.279.3419**

**[service@lillipaddivingboards.com](mailto:service@lillipaddivingboards.com)**

**FULL COLOR OWNERS MANUAL AVAILABLE AT  
[www.lillipaddivingboards.com](http://www.lillipaddivingboards.com)**

# TABLE OF CONTENTS

Introduction .....3

Intended Use.....4

Safety.....5

Boat Specifications for Approved Mounting .....6

Approved and Unapproved Mounting Locations.....7

Installing Mounting Hardware .....8

Daily Assembly Procedure.....12

Docking & Storage.....13

Care & Maintenance .....13

Return Authorization Policy .....14

Limited Warranty .....15

## PACKAGE CONTENTS: DIVING BOARDS WITH UNDERFLOOR MOUNT KITS

- Main Frame/Diving Platform
- Ladder Assembly
- Shock Assembly
- Stabilizer Bar
- (6) 6mm Machine Screws
- (1) ¼" X 2 ¼" Quick Release Pin
- (2) 3/8" X 2" Quick Release Pins
- (1) 3/8" X 1 ½" Button Lock Pin
- (1) ½" X 2 ½" Clevis Pin with Key
- (3) 10mm Eye Bolts
- (3) 10mm Plug Screws
- (3) Under-Floor Mounting Plates
- Owners Manual

## PACKAGE CONTENTS: DIVING BOARDS WITH SURFACE MOUNT KITS

- Main Frame/Diving Platform
- Ladder Assembly
- Shock Assembly
- Stabilizer Bar
- (1) ¼" X 2 ¼" Quick Release Pin
- (2) 3/8" X 2" Quick Release Pins
- (1) 3/8" X 1 ½" Button Lock Pin
- (1) ½" X 2 ½" Clevis Pin with Key
- (3) 10mm Eye Bolts
- (3) Stainless Steel Surface Plates
- (9) #12 \*1 ¼ Stainless Steel Screws
- (1) 6MM Screw
- (1) Washer
- (1) Nylock Nut
- Owners Manual

Make sure you have received the contents listed then record the following information for future reference: Date of purchase, location, serial number. Keep a copy of your receipt.

## INTRODUCTION

Water sports can be safe and fun for all levels of enthusiasts. This Manual is presented to enhance your enjoyment of this product and to alert you to dangerous conditions that can arise in any water sports.

Read this manual before assembling and using the product. Although the product is simple to use, this manual contains important safety information that you and all users must understand about this product.

If you have any questions regarding this product you may contact LilliPad, LLC at 800-279-3419. Please have your serial number available.

# **WARNING**

**UNSAFE USE OF THE LILLIPAD  
DIVING BOARD CAN RESULT IN  
PERSONAL INJURY OR DEATH.**

**To reduce the risk of injury, read and  
follow all instructions and warnings  
in this manual.**

**Do not use this product unless you  
understand this Manual and accept  
the risks of injury.**

# INTENDED USE INSTRUCTIONS

To ensure that you, your family, and guests are able to safely enjoy your diving board for many years, it is critical that you adhere to the following instructions every time you use your LilliPad Diving Board. Contact LilliPad, LLC at 800-279-3419 with any questions about the safe use of your diving board.

## DO

- Fully read your owner's manual before installing and using the product.
- **Make sure that the water is of proper depth (15 feet minimum) and free of obstructions before jumping.**
- Secure the boats location before using your diving board.
- Make sure that all LilliPad pins are properly positioned.
- Know the topography of the landscape below the water surface before jumping.
- Continually check the depth of the water for proper depth during use.
- Make sure that all family members and guests are familiar with these instructions before they use your diving board.
- Make sure that the diving board has been installed in compliance with the Assembly and Installation Instructions.
- Enter feet first the first time.
- Plan your path to be sure you avoid any other swimmers, or objects in or under the water.
- Become familiar with the Lillipad diving board and its shock system before jumping.
- **Make sure that any child or any non-swimmers are supervised at all times and wearing a USCG approved life vest.**
- Jump from the platform only.
- Jump straight ahead, not to the side of the LilliPad diving board platform.
- Inspect your LilliPad diving platform, frame, ladder and shock system before each day of use and keep them in proper repair.
- **Use only under mature, adult, supervision.**

## DON'T

- **Don't use this product in less than 15 feet of water! Most debilitating spinal cord injuries that occur while swimming involve diving into shallow water! Diving into shallow water produces serious risk of broken bones, cuts, nerve damage, spinal cord or brain injury, or death.**
- **Do not use alcoholic beverages in connection with the LilliPad Diving Board.**
- Never use the product after sunset, before dawn, or in any poor lighting conditions.
- Never use the product in rough surface water conditions, during storms, or when there is lightning.
- Don't install this LilliPad diving board on any surface not in compliance with the manufacturers specifications.
- Don't run and dive or use while the boat is in motion.
- Don't engage in horseplay on or around the LilliPad diving board.
- Don't use your LilliPad diving board as a base for any chains, ropes, or lanyards.
- Don't attempt any back or sideways dives from the LilliPad diving board. Only dive forward into water that is of 15 feet or more in depth.
- Don't attempt competitive dives from the LilliPad diving board. Keep all dives simple.
- Don't dive into or through objects or toys.
- Don't swim or use the LilliPad diving board alone.
- Don't use your LilliPad Diving Board if any part is showing signs of corrosion, appears worn-out or in need of repair.
- **Don't allow more than one person on the LilliPad diving platform or stairs at a time.**
- **Don't leave the LilliPad Diving Board platform-pin in the diving board when it is not in use.**

# SAFETY FIRST!

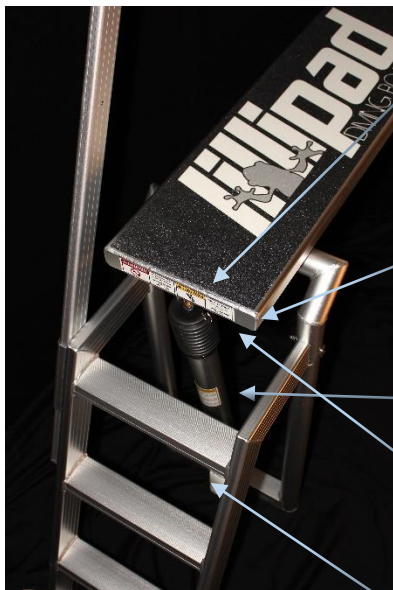
This LilliPad Diving Board shall be installed only under the exact specifications outlined in this manual. These installation instructions provided by LilliPad, LLC must be diligently followed.

LilliPad diving boards that are improperly installed can be very dangerous to the user resulting in possible serious injury, including injuries to, head, neck and/or spinal column injury, including the paralysis or death of the user.

It is very important that the LilliPad Diving Board and/or stand be installed only on a boat that is built in strict accordance with the standards as outlined herein. LilliPad Diving Boards are not to be erected or used under any circumstances on or any structure that is not a boat conforming to the standards and specifications herein. Any use other than as outlined herein shall void all warranties.

All users must follow all warnings provided with the LilliPad Diving Board. All warnings must be posted. If not provided or they are misplaced, please contact LilliPad, LLC immediately and post them in the proper location as depicted below.

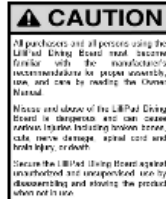
The following LABELS must be clearly displayed on your LilliPad Diving Board at all times. Contact LilliPad for free replacements:



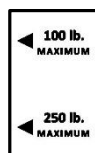
To be displayed on the end cap of the diving platform facing the user when climbing the stairs.

**CHECK YOUR DEPTH  
15' MINIMUM**

To be displayed on the underside of the diving platform visible when the diving platform is in the lowered position.



To be displayed directly below the shock bellows on the shock system, facing the ladder.



To be displayed on the underside of the diving platform to the right of the upper shock mount.



To be displayed 1 inch above the base of the shock, facing the ladder.

**THIS PRODUCT IS DESIGNED SOLELY FOR NON-COMMERCIAL USE ONLY. THIS PRODUCT IS NOT DESIGNED FOR COMMERCIAL, PUBLIC OR SEMI-PUBLIC USE. THIS PRODUCT IS DESIGNED FOR USE BY ONLY ONE PERSON AT A TIME.**

**MAXIMUM WEIGHT = 250 LBS**



# WARNING

FAILURE TO PROPERLY INSTALL THE MOUNTING SYSTEM AND/OR REMOVABLE CLEVIS PINS, EYE BOLTS, QUICK RELEASE PINS AND BUTTON HEAD LOCK PINS CAN RESULT IN PERSONAL INJURY OR DAMAGE TO THE LILLIPAD DIVING BOARD OR YOUR BOAT.

**Each mounting screw must be tightly fastened. Each eye bolt must be tightly fastened. The button head lock pin must protrude through all cross sections with the locking balls fully exposed on the protruding side. All clevis pins must protrude through all cross sections and be securely latched with the clevis pin key. All quick release pins must be seated with the holding ring against the frame to which it is being inserted.**

LILLIPAD DIVING BOARDS MUST ONLY BE INSTALLED USING THE FOLLOWING SPECIFICATIONS. FAILURE TO COMPLY COULD RESULT IN DAMAGE TO THE DIVING BOARD AND/OR BOAT AND SERIOUS INJURY OR DEATH.

## BOAT SPECIFICATIONS FOR APPROVED MOUNTING

Your LilliPad Diving Board is specifically designed for mounting on a boat with the minimum specifications as listed below. Lillipad Diving Boards patented design is made to contain the forces generated by the jumper within its framework. However, as with any fixture, there are some forces transmitted to the mounting surface (base). When mounted properly, very little to no movement of the diving board will be present.

### LILLIPAD DIVING BOARD MINIMUM MOUNTING SPECIFICATIONS

**For mounting to a boat ONLY with the following:**

- Boat length – Minimum 18'
- Boat Width – Minimum 7'
- Floor –  $\frac{3}{4}$ " Marine Grade Plywood or  $\frac{3}{4}$ " Solid Fiberglass
- Floor must be in excellent condition with no flexing, rotting, or damage of any sort present
- Floor should be inspected from below the boat continuously throughout the boating season to insure it remains in excellent condition

### APPROVED DIVING BOARD POSITIONING SPECIFICATIONS

Placement of your LilliPad Diving Board is very important. As all boats move in the water from wave action and other boat traffic, the most stable parts of the boat are recommended for installation.

**APPROVED Base Position:**

- **SIDE DOOR MOUNTING** - Side Door(s) mounting provides stability from boat movement and is free of protruding obstructions.
- **REAR PLATFORM / SWIM PLATFORM MOUNTING** - If your boat is equipped with a platform at the stern, mount on the Port side only.
- **FRONT/BOW MOUNTING** – Bow mounting is permitted on vessels that DO NOT have any objects protruding from the front of the vessel.

**NOT APPROVED:**

- **DO NOT** MOUNT TO ANY BASE THAT IS NOT A BOAT WITH APPROVED SPECIFICATIONS
- **FRONT/BOW MOUNTING** – **DO NOT** mount your LilliPad Diving Board on the front of your boat if any fixture protrudes from the perimeter of the flooring surface. For example, pontoons that protrude from the front of the vessel.
- **DO NOT** mount your Lillipad Diving Board on ANY structure not listed in the "Approved Base Position" list above. This includes but is not limited to docks, swim-platforms etc. Misuse of your Lillipad Diving Board could result in serious injury and/or death.



## APPROVED AND UNAPPROVED MOUNTING LOCATIONS

SIDE LOCATION  
APPROVED DOOR  
MOUNT LOCATION

SIDE LOCATION  
APPROVED DOOR  
MOUNT LOCATION

### DANGER

DO NOT MOUNT ON  
FRONT OF BOATS  
with protruding  
fixtures.

FRONT LOCATION  
APPROVED MOUNT LOCATION  
TRITOONS ONLY WITH NO  
PROTRUDING FIXTURES

### DANGER

DO NOT MOUNT TO  
UPPER LEVEL DECKS

AFT LOCATION  
APPROVED MOUNT LOCATION  
PORT SIDE ONLY  
DIVING BOARD MUST PROTRUDE FROM SIDE

### DANGER

DO NOT MOUNT TO  
STARBOARD LOCATION

### INTEGRATED SWIM PLATFORM

APPROVED MOUNT LOCATION  
SWIM PLATFORM MUST BE INTEGRATED AND  
MEET MINIMUM MOUNTING SPECIFICATIONS

## ASSEMBLING YOUR LILLIPAD DIVING BOARD

**WARNING:** Do not install on a boat that does not meet the minimum specifications outlined in the Manual or on any boat with soft or deteriorated floor boards. Your LilliPad Diving Board should be solid, without movement in the base, when mounted properly. If you have any questions contact LilliPad, LLC.

### INSTALLING UNDERFLOOR MOUNTING PLATES

#### Step 1:

Determine an appropriate and approved (*see pages 6 & 7*) mounting location which is free of obstructions for mounting hardware and provides for safe use of your assembled diving board.

Inspect floor where board is to be mounted. Flooring material must be  $\frac{3}{4}$ " Marine Grade Plywood in excellent condition. It is also recommended to confirm clearance of frame members, cables, wires and lines.



#### Step 2:

Place your assembled Diving Board on the deck in your mounting location. (See Daily Assembly)

#### Step 3:

With the diving platform in the lowered position and the frame perpendicular (90°) to the deck, determine the appropriate frame position:

When possible, position a frame cross member between two of the three mount plates. Place the frame mount on one side of a cross member and a ladder mount on the other side. (This utilizes the frame cross member strength and prevents movement.)

#### Aft decks or other open areas:

Align the lowered platform to be positioned slightly recessed from the gunnel or side railing. Proper installation allows for docking or rafting without exposing the diving platform outside of the vessels perimeter.



#### Over railing or side gate:

Align the platform to lay perfectly flat against the outside of the railing or gate. (Silicone stick on buttons are provided in the mount hardware kit to prevent direct contact)



#### Step 4:

Determine the appropriate ladder position by raising your diving platform and installing the button lock pin. Move the ladder forward or backward until your diving platform is level with the flooring surface of the boat.



#### TOOLS NEEDED FOR INSTALLATION

3/16" Drill Bit

5/16" Drill Bit

1/2" Drill Bit

11/64 Drill Bit

#3 Screw Driver

Aluminum Yard Stick

Level





#### Step 5:

Once the frame and ladder positions have been re-confirmed, hold the frame and ladder securely in place and drill  $\frac{1}{2}$ " holes through the floor using the frame and ladder as a template. *Note: Always use sharp drill bits.*

#### Step 6:

Remove the assembled diving board and position the mount plates so the rivet nut is centered in the  $\frac{1}{2}$ " holes.

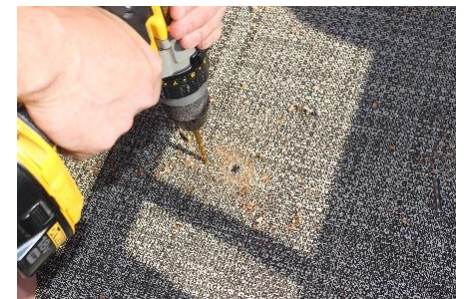


#### Step 7:

Using the mount plates as a template, drill a  $\frac{3}{16}$ " pilot hole centered in each of the 6mm threaded holes.

#### Step 8:

Remove the plates and enlarge the holes to  $\frac{5}{16}$ ".



#### Step 9:

Secure the Under Floor Mount Plates to the underside of the floor.

##### 1) For installations on boats without under floor skin's:

- Position each plate on the underside of the floor with the rivet nut pointing down.
- Thread the eye bolts through the floor and into the plates, tightening enough to pull the plate snug to the bottom of the floor.
- Align and install the 6mm screws using a #3 screw driver. Be sure to pull the head into the flooring material so as to not protrude above the surface. Insure the plate is tight to the bottom of the floor with no air gaps.

##### 2) For installations on boats with under floor skins:

- Note the distance from one of the  $\frac{1}{2}$  inch holes in the floor to the outer edge of the rub rail using an aluminum yard stick.
- With a  $\frac{5}{8}$  hole in the end of your aluminum yard stick, place an Under Floor Mount Plate on the yard stick with the rivet nut down through the hole in the yard stick and slide it under the floor back to the noted measurement.
- With the rivet nut aligned with the  $\frac{1}{2}$  inch hole in the floor, thread an eye bolt into the rivet nut and tighten the eye bolt until the plate is close to the bottom of the floor.
- Using a scratch awl, drill bit or nail, align the 6mm threaded hole with the  $\frac{5}{16}$ " hole.
- Tighten the eye bolt so the plate is tight with the bottom of the floor.
- Install the 6mm screws using a #3 screw driver. Be sure to pull the head into the flooring material so as to not protrude above the surface.



Your mounting hardware is fully installed. You can now install your diving board as instructed in the Daily Assembly section of the manual. Take note to Step 6.

## INSTALLING SURFACE MOUNT PLATES

Surface Plates are recommended for boats where accessing the underside of the floor is not possible or where frame members prevent the proper placement of the Under Floor Plates. Surface Plates are also recommended for Fiberglass Boats with integrated swim platforms, Houseboat Decks, Cruiser Decks, Sailboat Decks and Yachts.

### Step 1.

Determine an appropriate, and approved (*see pages 6 & 7*) mounting location which is free of obstructions for mounting hardware and provides for safe use of your assembled diving board.

- Inspect floor where board is to be mounted for construction, thickness and strength.
- The following specifications must be met for approved installation:
  - Minimum  $\frac{3}{4}$ " thickness of Marine Grade Plywood or Minimum  $\frac{3}{4}$ " solid Fiberglass flooring
  - Ability to secure one linear set of screws (See lines with screws marked with "X" in step 11) into a frame member.

### Step 2.

Place your assembled Diving Board on the deck in your mounting location. (See Daily Assembly)



### Step 3.

With the diving platform in the lowered position and the frame perpendicular (90°) to the deck, determine the appropriate frame position:

#### Aft decks, swim platforms or other open areas:

Align the lowered platform to be positioned slightly recessed from the gunnel or side railing. Proper installation allows for docking or rafting without exposing the diving platform outside of the vessels perimeter.

#### Over railing or side gate:

Align the platform to lay perfectly flat against the outside of the railing or gate. (Silicone stick on buttons are provided in the mount hardware kit to prevent direct contact)



### Step 4.

Determine the appropriate ladder position by raising your diving platform and installing the button lock pin. Move the ladder forward or backward until your diving platform is level with the flooring surface of the boat.



### Step 5.

Once the frame and ladder positions have been re-confirmed, mark the mounting footprint and anchor holes on the floor using the frame and ladder as a template.





**Step 6.** Remove the assembled diving board.

**Step 7.**

Position the mount plates in the traced footprint ensuring the threaded mount plate hole is centered in the traced hole.

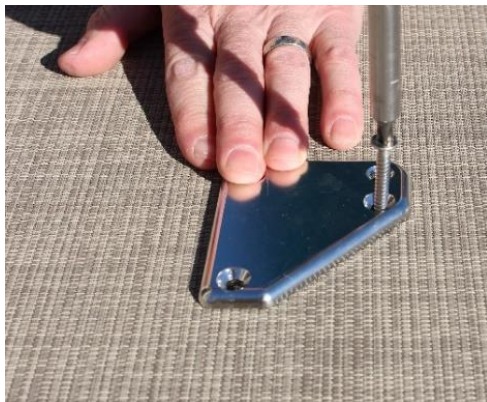
**Step 8.**

Drill a 5/32" hole for fiberglass, 9/64" hole for plywood flooring, closest to the threaded mount hole on each of the three plates. Be sure to drill the full depth of the screws. **When drilling through an aluminum deck or aluminum cross member under plywood flooring, use 11/64" drill bit.**



**Step 9.**

(Fiberglass Only) As an added barrier and to adhere the plates to the deck, apply a quality marine grade adhesive to adhere the mount plates to the deck prior to securing with mounting screws.

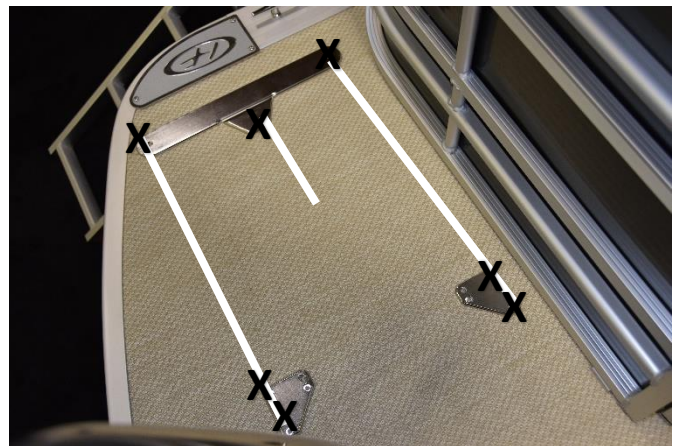


**Step 10.**

Once the plates are positioned, secure the mount plates beginning with the drilled hole using the #12 stainless steel mounting screws. Use a #3 screw driver and take care to not over torque the screw. When screwing #12 screws into aluminum, place a small dab of grease to the screw tip to aid in cutting threads into aluminum. **(Plywood Only) If the center mount screw of the main frame plate does not contact an aluminum deck or frame member, install the supplied 6 mm machine screw, washer, and nylock nut.**

**Step 11.**

Pilot drill and install the remaining 2 screws in each plate using the same drill specifications as Step 7.



**Step 12.**

Install your assembled diving board using the eye bolts to secure the frame and ladder to the mount plates.

**Step 13.**

Remove any gaps between the mount plates and assembly by torqueing on the eyebolts with a screw driver to fully seat them. (After initial assembly, eyebolts can be installed hand tight as instructed in the daily assembly procedure.)

Complete installation using Daily Assembly Procedures. Note step 6.



## DAILY ASSEMBLY PROCEDURES



### STEP 1.

Position the frame over the frame mounting hole and secure it to the plate below using an eye bolt.

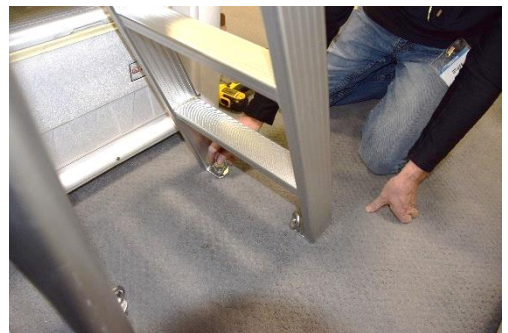
### STEP 2.

Slide the ladder into the slots in the frame and secure with the 3/8" quick release pins



### STEP 3.

Align the mounting holes of the ladder over the ladder mounting holes and secure the ladder to the plates using eye bolts.



### STEP 4.

Tighten each eyebolt to secure the frame and ladder. **Begin by hand-tightening and secure by using a button-lock pin as leverage – do not over torque.**

### STEP 5.

Raise the diving platform into position and install the button head locking pin in the upper mount and shock eye.

**Position 1** is designed for user weighing 100 – 250 lbs.

**Position 2** is designed for user under 100 lbs.



### STEP 6.

Insert the stabilizer bar and position it to the height desired. Lock it in place by inserting the locking pin.

***NOTE: UHMW inserts are positioned on the inside of the stabilizer housing. During initial installation insert the stabilizer rail and apply pressure in each direction to seat the profile into the UHMW. The rail is designed to fit tight but with proper seating will easily slide in and out.***

### STEP 7.

Double check all fasteners to make sure they are properly tightened and/or inserted.



## DOCKING & STORAGE

Your new LilliPad Diving Board is easily lowered for safe boating, docking or rafting.

You can also quickly and easily remove the LilliPad Diving Board completely from your boat for safe storage by removing the three eye bolts that secure the frame to the floor of the boat and removing the retaining pins.

When the LilliPad Diving Board is not being used, it should be stored in the lowered position with a LilliPad Protective Cover in place to shield the grip tape from ultraviolet (UV) rays and extend the life of the product. When removed from the boat the diving platform should also be covered to protect the grip tape from scratching.



## CARE & MAINTENANCE

Following simple care and maintenance procedures, sticking to a schedule and using only LilliPad designed components will help to extend the life of your LilliPad Diving Board.

To protect your LilliPad Diving Board from harsh ultraviolet rays and to prevent the build-up of marine growth it is recommended that the diving board is removed after each day of use, wiped with a dry cloth, and stored in a dry and covered location or dried and covered with a LilliPad Protective Cover.

## MAINTENANCE SCHEDULE

Apply spray silicone to the following areas to insure proper lubrication for smooth movement and to prevent squeaking, as needed.

- White UHMW bushings where bushings meet the aluminum tube
- Inside the shock tube where the Urethane Spring touches the inside of the tube (remove shock and turn upside down)
- Button Lock Pins



To increase the life of your LilliPad Diving Board it is recommended that the following parts be replaced within the timeframe listed below:

PART	REPLACEMENT SCHEDULE
Grip Tape	Yearly
¼" X 2 ¼" Quick Release Pin	Every 2 years
3/8" X 2" Quick Release Pins	Every 2 years
3/8" X 1 ½" Button Lock Pin	Every 2 years
½" X 2 ½" Clevis Pin with Key	Every 2 years
6mm Machine Screws	Every 5 years
10mm Eye Bolts	Every 5 years
Under-Floor Mounting Plates	Every 5 years
Shock Assembly	Every 5 years
Surface Mount Plates	Every 5 years

## RETURN AUTHORIZATION POLICY

1. Customer must ship the product covered by the Return Authorization (R/A) number within thirty (30) days of receipt of the R/A number. Failure to ship the product within thirty (30) days will result in the forfeiture of the R/A. LilliPad, LLC (LilliPad) will not accept any product that fails to ship within thirty days of the issuance of a R/A.
2. LilliPad, LLC will determine whether the product being returned under the R/A Policy is covered by LilliPad's Limited Warranty.
3. LilliPad agrees to notify or provide, within a reasonable time period, the customer with:
  - a. The acceptance or rejection by LilliPad, LLC of the warranty claim.
  - b. For products outside of the Limited Warranty, a quote for the repairs required to return the product to a usable state which may include a cleaning charge for any excessively dirty parts. Customer's failure to accept the price quote in accordance with Section 3(c) below will result in the return of the product, FOB shipping location to the address provided by the customer or demolition of the product by LilliPad, LLC at the option of customer. Customer is responsible for all costs of shipping and handling associated with the return of the product, and the customer agrees to accept such charges.
  - c. If LilliPad does not receive an approval from the customer for return of the product within 45 days of LilliPad LLC's quote, the product will be demolished by LilliPad, LLC.
4. Upon customer approval, LilliPad will complete all necessary repairs. If additional damages are discovered during the repair of the product LilliPad, LLC will contact the customer with authorization to proceed.
5. LilliPad will ship the product at the customer's expense to the address provided FOB shipping location.



## LIMITED WARRANTY

This product is warranted to be free from defects in materials or workmanship for two years from the date of purchase by the original purchaser. Within this period, LilliPad, LLC will, at its sole option, repair or replace any components that fail in normal use. Such repairs or replacement will be made at no charge to the customer for parts or labor, provided that the customer shall be responsible for any transportation cost. This warranty does not apply to: (i) cosmetic damage, such as scratches, nicks and dents, (ii) damage caused by accident, abuse or misuse, (iii) damage caused by service performed by anyone who is not an authorized service provider for Lilli Pad, LLC; or (iv) damage to a product that has been modified or altered without the written permission of Lilli Pad, LLC. In addition, Lilli Pad, LLC reserves the right to refuse warranty claims against products or services that are obtained and/or used in contravention of the laws of any country.

This product is intended to be used only as a diving board attached to a boat conforming with the standards set forth in the LilliPad Owner Manual.

THE WARRANTIES AND REMEDIES CONTAINED HEREIN ARE EXCLUSIVE AND IN LIEU OF ALL OTHER WARRANTIES EXPRESS, IMPLIED OR STATUTORY, INCLUDING ANY LIABILITY ARISING UNDER ANY WARRANTY OF MERCHANTABILITY OR FITNESS FOR A PARTICULAR PURPOSE, STATUTORY OR OTHERWISE. THIS WARRANTY GIVES YOU SPECIFIC LEGAL RIGHTS, WHICH MAY VARY FROM STATE TO STATE.

IN NO EVENT SHALL LILLI PAD, LLC BE LIABLE FOR ANY INCIDENTAL, SPECIAL, INDIRECT OR CONSEQUENTIAL DAMAGES, WHETHER RESULTING FROM THE USE, MISUSE OR INABILITY TO USE THE PRODUCT OR FROM DEFECTS IN THE PRODUCT. SOME STATES DO NOT ALLOW THE EXCLUSION OR INCIDENTAL OR CONSEQUENTIAL DAMAGES, SO THE ABOVE LIMITATIONS MAY NOT APPLY TO YOU.

Lilli Pad, LLC retains the exclusive right to repair or replace the product or offer a full refund of the purchase price as its sole discretion. SUCH REMEDY SHALL BE YOUR SOLE AND EXCLUSIVE REMEDY FOR ANY BREACH OF WARRANTY.

To obtain warranty service, contact your local Lilli Pad, LLC authorized dealer or call Lilli Pad, LLC for shipping instructions and a R/A Number. Securely pack the product and a copy of the original sales receipt, which is required as the proof of purchase for warranty repairs. Write the R/A Number cleanly on the outside of the package. Send the product, freight charges prepaid, to any Lilli Pad, LLC warranty service station.

For Technical Support or Assistance  
Contact Customer Service at:

**[www.LilliPadDivingBoards.com](http://www.LilliPadDivingBoards.com)**

**800.279.3419**



